

COLLECTION

CLICK

LOUNGE CHAIR

DESIGN BY

HENRIK PEDERSEN

PRODUCT NO.

10811-XX18

CLICK Lounge chair. This Lounge chair is an extension of CLICK Rocking chair. The comfort is the same – so for those who are not about to rock – choose the Lounge chair. The lamellas are composed with exactly the right resilience to provide excellent cushion-free comfort.



TECHNICAL INFO

DESCRIPTION

Frame	Powder coated steel
Lamella	Polypropylene PP
Armrest	Bamboo
Stackable	6
Static load	N/A
Test	N/A

SPAREPART

92-0100
10808-XX
96-1804
90-0001
90-0100

Chair shoe
Lamella Ø12
Armrest set, long
Repair lacquer
Bamboo oil

TECHNICAL INFO

¹ Width	63,0 cm	24.8 in
² Depth	90,0 cm	35.4 in
³ Height	95,5 cm	37.6 in
⁴ Seat height	26,5 / 37,5 cm	10.4 / 14.8 in
⁵ Armrest height	51,5 cm	20.3 in
Overall diameter	98,5	38.8 in
Weight	10,8 kg	23.8 lbs

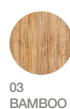
LAMELLA COLOR (XX)



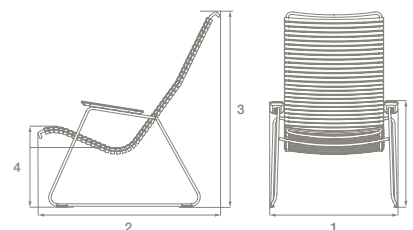
FRAME COLOR



ARMREST



DRAWINGS



CONSTRUCTION WARRANTY: 5 years

See DESCRIPTION for links to [MATERIALS & MAINTENANCE](#), including [WARRANTY](#) and [TERMS & CONDITIONS](#)

HOUE

NORTH AMERICA (USA & CANADA)
T: +1 800 980-4858
M: SALESUS@HOUE.COM

INTERNATIONAL (ALL OTHER REGIONS)
T: +45 53780800
M: INFO@HOUE.COM